



# Cyble Dock

The Cyble Dock allows the radio to be mounted in a more desirable position to optimise radio performance of meters installed in difficult locations such as deep or flooded pits.

## FEATURES AND BENEFITS

### Universal Design

- » Easily attaches to all Cyble modules including Cyble 5, Anyquest and Everblu.
- » Can be retrofitted and re-use existing Cyble module.
- » Supports connection to Itron meters equipped with a wired pulse output.

### Maintains reliability in extreme conditions

Built to resist water, contaminants, corrosion, rough handling, and temperature cycling.

### Simple Installation

- » Same wiring colours as Cyble Sensor for easy connection.
- » Connection secured by gel connectors.



NO CONNECTIVITY

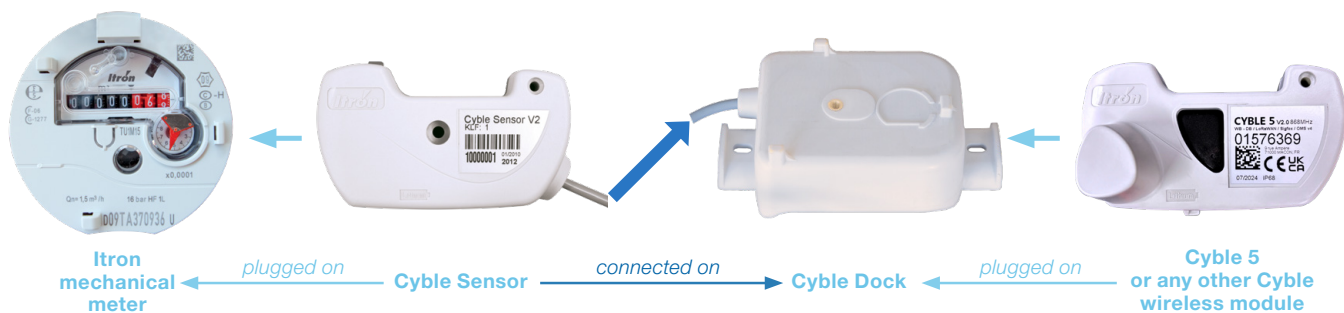
Itron mechanical meter  
equipped with Cyble  
wireless module



CONNECTIVITY  
ENABLED

Cyble dock  
equipped with Itron  
Cyble wireless  
module

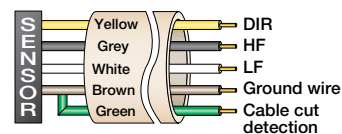
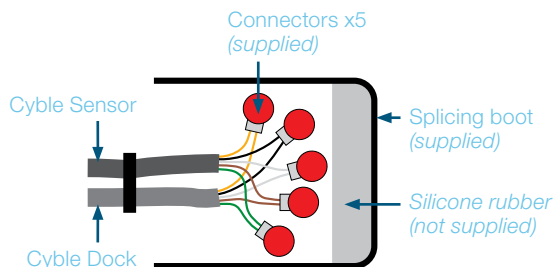
Itron mechanical meter  
equipped with Cyble  
Sensor module



## CONNECTIONS

### » Step 01

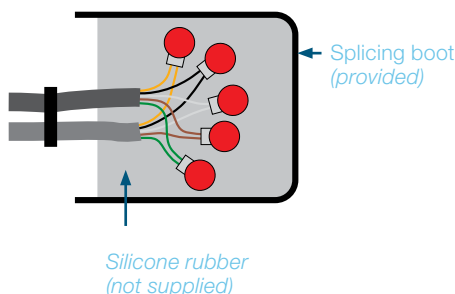
- Wire the two cables together using the 5 connectors
- Apply a layer of silicone inside the splicing boot
- Insert the wired connectors into the splicing boot



Cyble Sensor 5-wires

### » Step 02

- Inject silicone into the splicing boot, covering the connectors



## Technical Details

Functionality	Details
Cyble modules compatibility	All types of Cyble family modules
Pulse Ratio	1:1
Max pulse frequency	Upto 17 Hz
Battery / Lifetime	Lithium / 10 Years
Operating Temperature	- 15oC to + 55oC
IP Level	IP66
Additional 2 Stage Protection	Resin flooding, glued casing protection and chemical welding
Cable length	50cm
Dimensions (W x D x L)	113.5 x 63.6 x 41.6 mm
CE	Directive EMC 2014/30/UE

To learn more visit [itron.com](http://itron.com)

Join us in creating a more resourceful world

While Itron strives to make the content of its marketing materials as timely and accurate as possible, Itron makes no claims, promises, or guarantees about the accuracy, completeness, or adequacy of, and expressly disclaims liability for errors and omissions in, such materials. No warranty of any kind, implied, expressed, or statutory, including but not limited to the warranties of non-infringement of third party rights, title, merchantability, and fitness for a particular purpose, is given with respect to the content of these marketing materials. © Copyright 2024 Itron. All rights reserved. **SYS-Cyble\_Dock.1-EN-10.24**

**Itron**

9, rue Ampère  
71031 Mâcon cedex - France

Tel: +33 3 85 29 39 00

Fax: +33 3 85 29 38 58